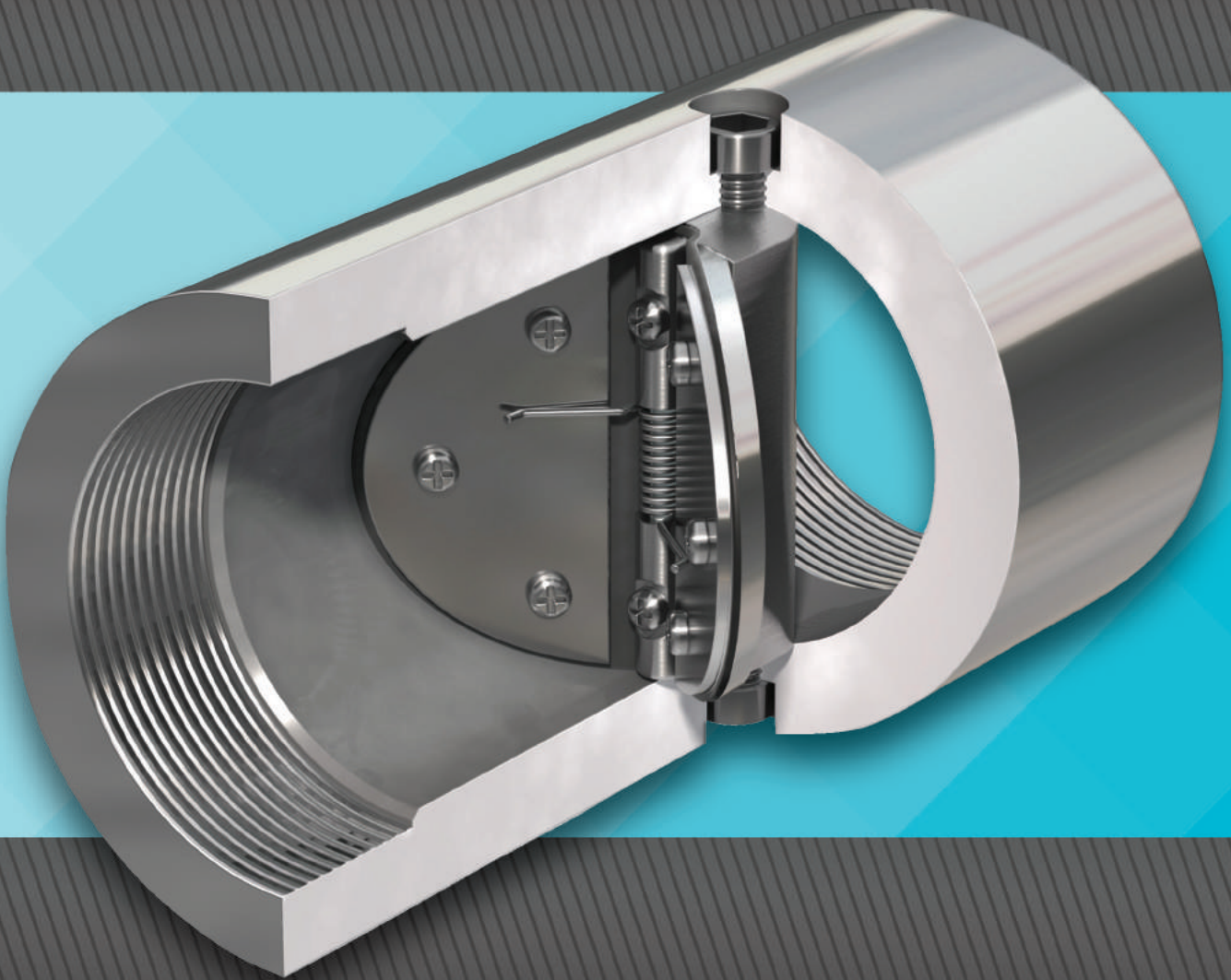


**TECHNO Deep Well Check Valves
With Female Threaded Ends**

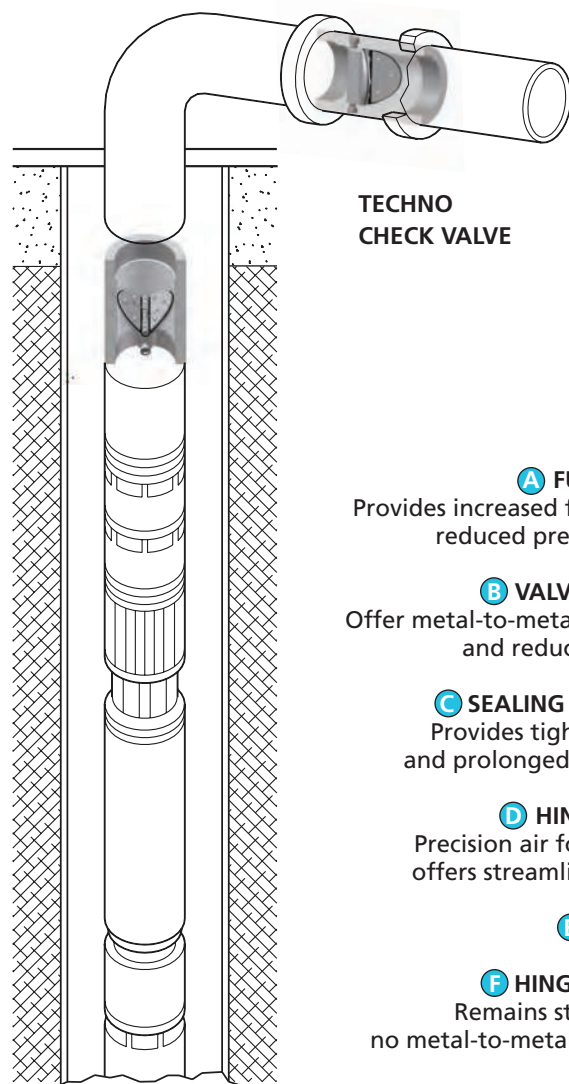


TECHNO Deep Well Check Valves With Female Threaded Ends

TECHNO™ heavy-duty deep well check valves are an ideal solution to overcoming water hammer and resolving your submersible pumping systems' check valve problems.

The TECHNO deep well check valve's exceptional response to quick starting pumps and high head impacts distinguishes it as a superior valve for submersible service.

Specially designed for deep well applications, TECHNO's standard female threaded check valves are rated for 450 psi service or depths of 1000 ft (305 m).



**TECHNO
CHECK VALVE**

- A FULL PORT**
Provides increased flow with reduced pressure loss
- B VALVE PLATES**
Offer metal-to-metal support and reduced travel
- C SEALING MEMBER**
Provides tight shutoff and prolonged cycle life
- D HINGE POST**
Precision air foil design offers streamlined flow
- E SPRING**
- F HINGE CLAMP**
Remains stationary; no metal-to-metal rotation

The heavy wall body is designed to handle heavier pump and pipe weights. These features are combined with the unique TECHNO internal design to ensure that once you send it down, it's there to stay.

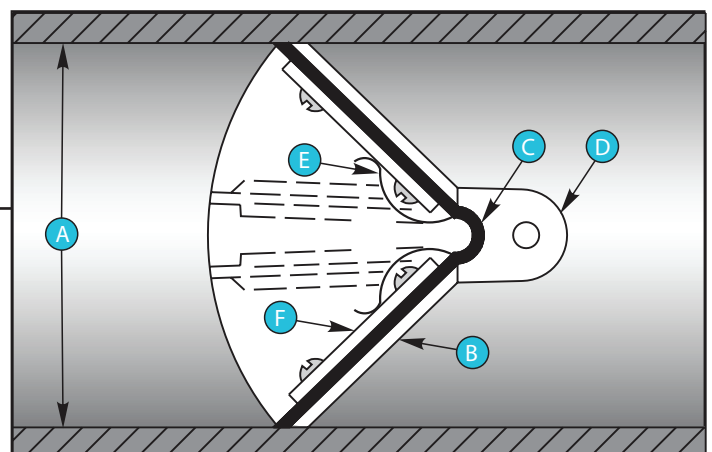
The standard deep well valve can be machined to accept a breakaway plug with drainage orifice upon customer request. All deep well check valves are standard with spring.

TECHNOLOGICALLY ADVANCED INTERNAL DESIGN

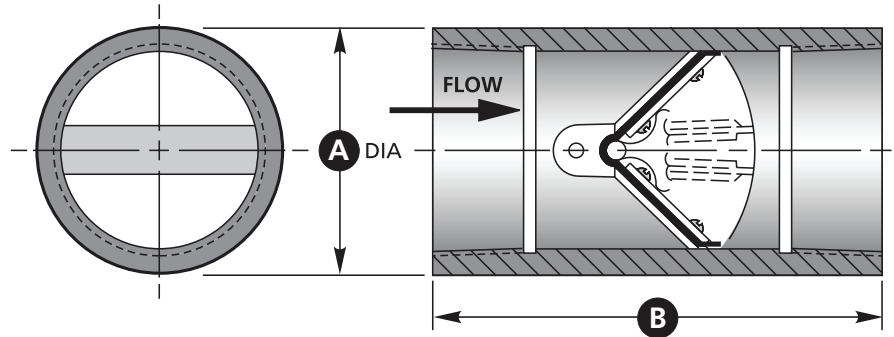
Engineered elastomers, developed for durability beyond the range of ordinary rubbers, provide the hinge and seal in the patented TECHNO design. These tough, flexible, reinforced elastomers are resistant to liquids, gases, steam, chemicals, oil and fuel.

The strength and durability of these elastomers ensure prolonged cycle life. TECHNO's unique resilient seal provides an airtight shutoff.

Inherent features include large free area with resulting low pressure loss, high sealing integrity from the continuous seal design, reduced noise and wear by the elimination of metal-to-metal rotating parts, and stable operation under a wide range of flow rates.



Style 5002F and 5002F-316



GENERAL DIMENSIONS

VALVE SIZE	A	B
1	4 1/2	1 7/8
1 1/4	4 1/2	2 1/4
1 1/2	5	2 1/2
2	5	3
2 1/2	5 1/2	3 3/8
3	6	4
4	7	5 1/4
5	8	6 1/4
6	9	7 1/2
8	11	9 5/8
10	13	12
12	15	14

SEALING MEMBER MATERIALS

MATERIALS	TEMPERATURE RANGE*
• Buna-N	-60° F to 225° F
• EPDM	-40° F to 300° F
• Viton	-20° F to 400° F
• Silicone	-100° F to 500° F

* This temperature range is for general guidance. The figures may vary with application.

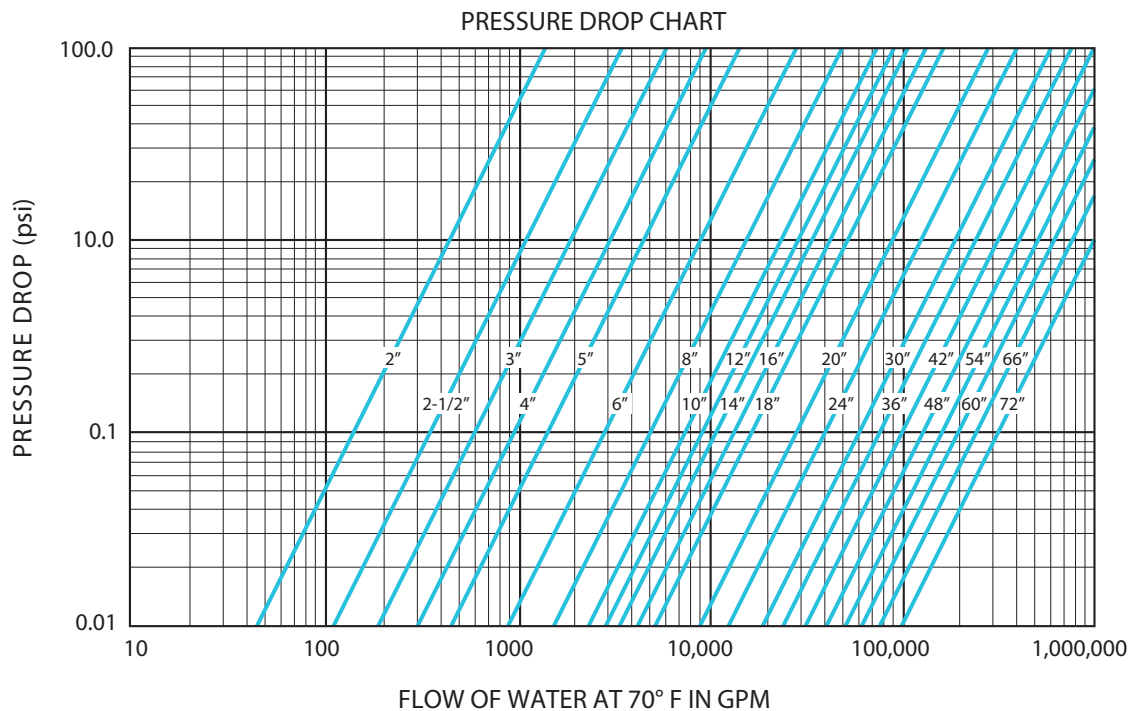
CONSULT FACTORY FOR MATERIALS, SIZES AND PRESSURE RATINGS NOT SHOWN.

STANDARD MODELS AND MATERIALS

STYLE	BODY	INTERNALS	SPRINGS	CWP(psi)
5002F	Carbon Steel	Plated Steel	302 Stainless Steel	450
5002f-316	316 Stainless Steel	316 Stainless Steel	302 Stainless Steel	450

Standard Elastomer: Buna-N

Upon request, body can be drilled and tapped to accept a breakaway plug or drainage adapter.





Tel: (410) 636-3380

Fax: (410) 789-1009

www.technovalve.com